

1st ALTO SAX

# TINSEL

Recorded on "Dues," Mainstream Records #MRL-359

WILLIE MAIDEN

Musical notation for the first part of the piece, including a treble clef staff with a key signature of three sharps (F#, C#, G#) and a common time signature. It features a saxophone part with various notes, rests, and articulation marks like accents and slurs. A circled 'S' is present in the second measure of the saxophone part.

Musical notation for the second part of the piece, showing two first endings. The first ending is marked '1.' and the second is marked '2.'. A circled 'B' is located at the end of the second ending.

**SOLO**

A#m7b5 D#m7 G#7 C#m7 C9 Bm11

Bm11 Fmaj9 Bbmaj9+11 Amaj9+11 Am13

G#m7 C#7 Gm7 C7 F#m7 B7 Cm7 F7

P & R  
MUSIC PUBLISHERS

SOLE SELLING  
© 1973  
INTERNATIONAL

ALTO I

$\text{F}\#\#\text{)} \quad \text{G}\#\text{m}^7 \quad \text{G}^7 \quad \text{CMAJ}^7 \quad \text{FMAJ}^7 \quad \text{C} \quad \text{EMAJ}^7$

$\text{D}\#\text{m}^7\text{b}5 \quad \text{G}\#\text{m}^7\text{+5} \quad \text{C}\#\text{m}^9 \quad \text{C}^9$

$\text{Bm}^9 \quad \text{Bb}^9\text{+11} \quad \text{A}^9\text{MAJ}^9\text{+11}$

$\text{Am}^9 \quad \text{D}^9 \quad \text{G}\#\text{m}^9$

$\text{Gm}^9 \quad \text{C}^9 \quad \text{F}\#\text{m}^9 \quad \text{B}^7$

$\text{Cm}^9 \quad \text{F}^7 \quad \text{E} \quad \text{G}\#\text{m}^7 \quad \text{C}\#\text{m}^7$

$\text{F}\#\text{m}^7$

ALTO I

# J-278

PASADENA CITY COLLEGE MUSIC DEPT

Handwritten musical score for Alto I, titled "J-278". The score consists of ten staves of music. The first staff begins with a treble clef and a key signature of two sharps (F# and C#). The music is characterized by frequent triplets and slurs. A "-3-" annotation is placed above the first staff. The score includes various dynamic markings such as accents (>) and slurs. There are several measure rests, with some marked with a "2" or "11" below the staff. The notation includes eighth and sixteenth notes, often grouped in triplets. The piece concludes with a final triplet in the tenth staff.

ALTO I

The musical score for Alto I on page 4 consists of seven staves of music. The first six staves contain melodic lines with various triplet markings and slurs. The seventh staff begins with a double bar line and a box containing the text "D. S. AL CODA". Below this, there are two empty staves, followed by a final staff containing a Coda symbol (a circle with a cross) and a musical phrase.

# 2nd ALTO SAX

# TINSEL

Recorded on "Dues," Mainstream Records #MRL-359

WILLIE MAIDEN

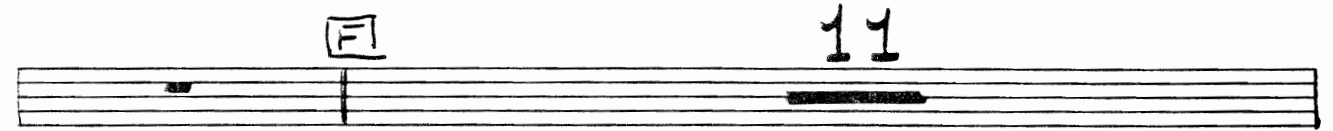
P & R  
MUSIC PUBLISHERS

SOLE SELLING AGENT  
© 1973 Film Music Co.  
INTERNATIONAL RIGHTS RESERVED

Musical score for Alto II, page 2. The score consists of ten staves of music. The first staff begins with a treble clef, a key signature of three sharps (F#, C#, G#), and a 7/8 time signature. The music is written in a single system. The score features various rhythmic patterns, including eighth and sixteenth notes, and rests. There are several trills marked with a '3' and a fermata. A dynamic marking '5' is present on the fourth staff. A chord symbol 'D' is written in a box above the fifth staff. The piece concludes with a final note on the tenth staff.

ALTO II

- 3 -



11



ALTO II

First staff of music, featuring a treble clef and a key signature of three sharps (F#, C#, G#). The melody consists of eighth and sixteenth notes, with several triplet markings (indicated by a '3' in a circle) and a long slur spanning the entire staff.

Second staff of music, continuing the melodic line with eighth and sixteenth notes and triplet markings.

Third staff of music, continuing the melodic line with eighth and sixteenth notes and triplet markings.

Fourth staff of music, continuing the melodic line with eighth and sixteenth notes and triplet markings. A box containing the text "D. S. AL CODA" is positioned above the staff.

Two empty musical staves.

Fifth staff of music, starting with a circled treble clef and a key signature of one sharp (F#). The melody continues with eighth and sixteenth notes and triplet markings.



# 1st TENOR SAX

## TINSEL

Recorded on "Dues," Mainstream Records #MRL-359

WILLIE MAIDEN

**A** **S** 10 **O** 2

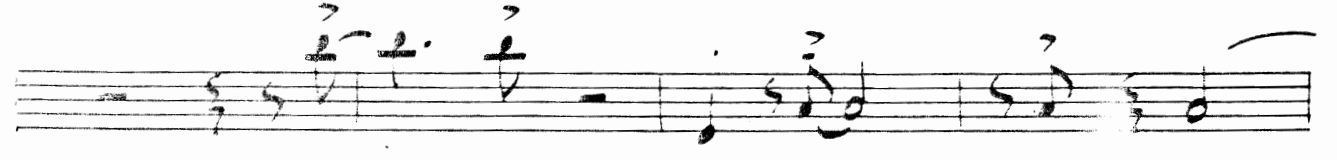
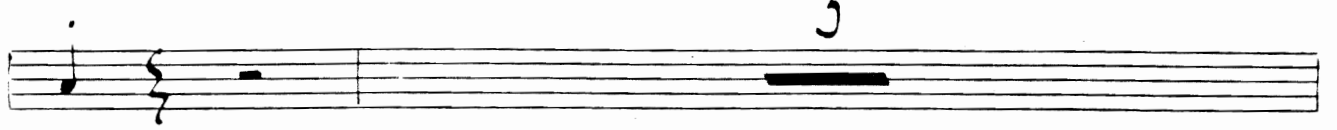
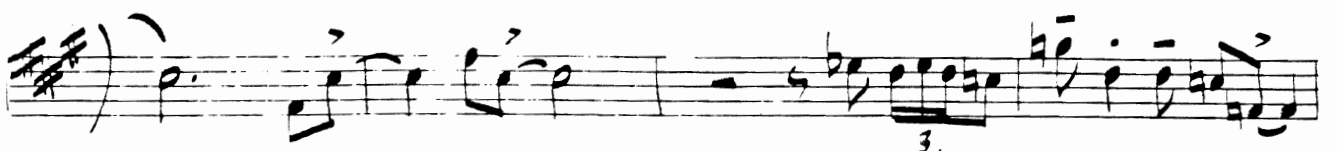
**B**

5

**C**

W. R.  
MUSIC PUBLISHERS

SOLE SELLING AGENT  
© 1973 FINE  
INTERNATIONAL





Musical staff with treble clef, key signature of two sharps (F# and C#), and a melody. The melody consists of several measures, including a triplet of eighth notes, a half note, and another triplet of eighth notes. Slurs are placed over the first and last groups of notes.

Musical staff with a box containing the text "D. S. AL CODA". The staff shows a few notes and rests, indicating a section of the score.

Musical staff with a circular symbol at the beginning, possibly a fermata or a specific performance instruction. The staff contains a melody with triplets and slurs, ending with a fermata.

# 2nd TENOR SAX

## TINSEL

Recorded on "Dues," Mainstream Records #MRL-359

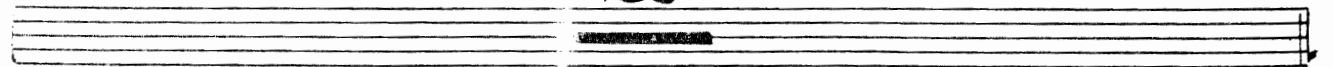
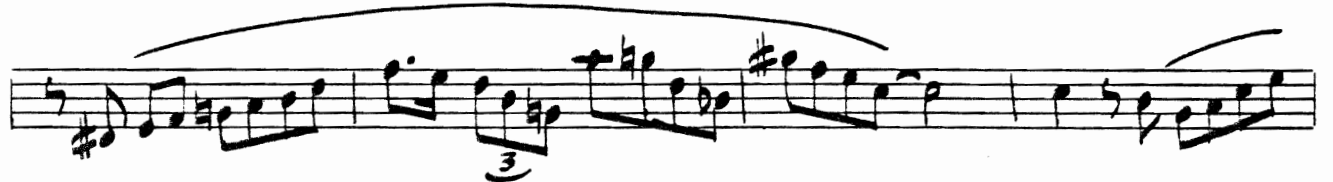
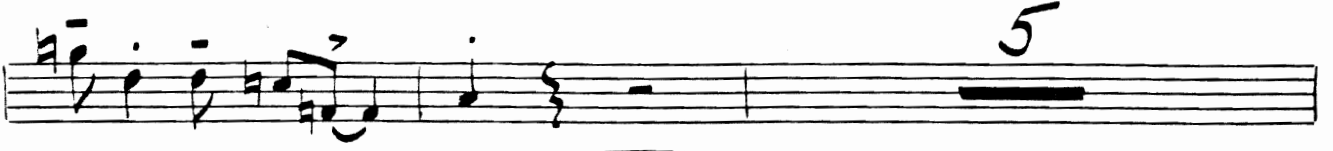
WILLIE MAIDEN

1. 2. 3 10 6 C

P & R  
MUSIC PUBLISHERS

SOLE SELLING AGENT

© 1973 Finis Music Co.



TEN. II

. 3 .

F

##

11

2

D. S. AL CODA



# BARITONE SAX

## TINSEL

Recorded on "Dues," Mainstream Records #MRL-359

WILLIE MAIDEN

A

S

6

S

B

5

C

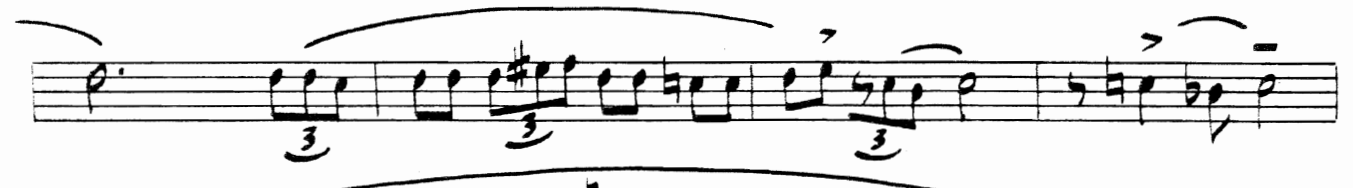
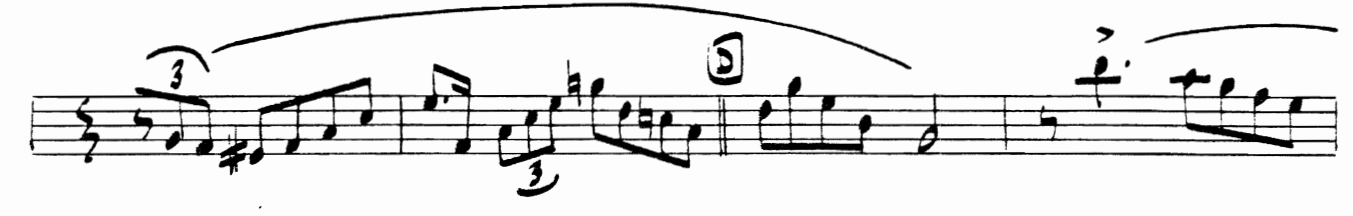
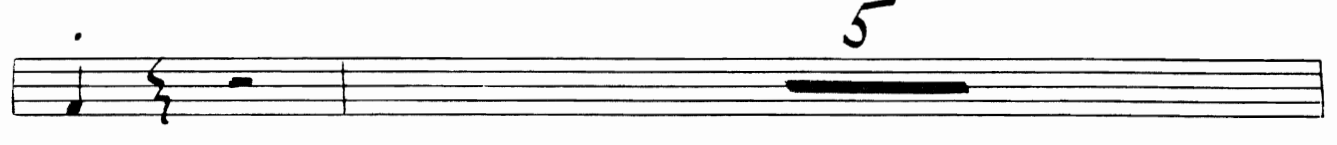
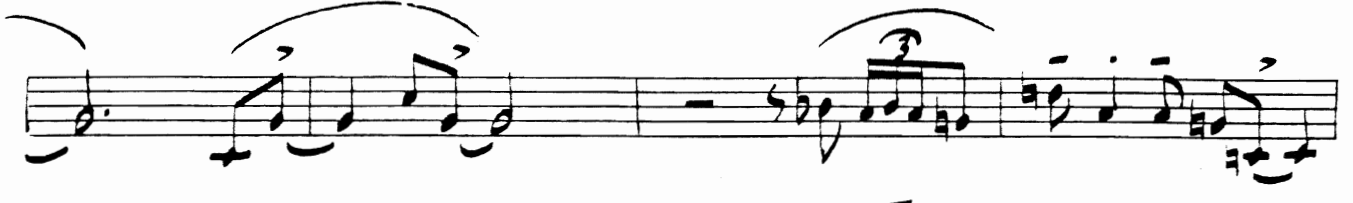
P. R.  
MUSIC PUBLISHERS

© 197

Co.

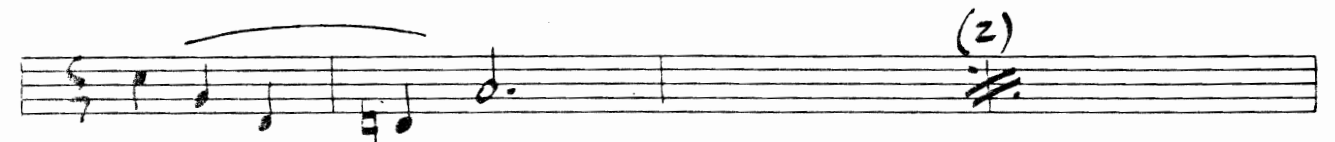
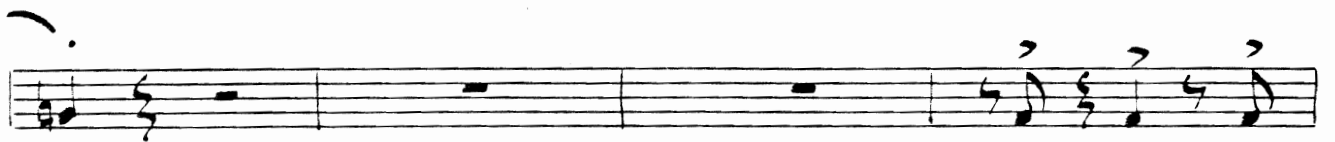
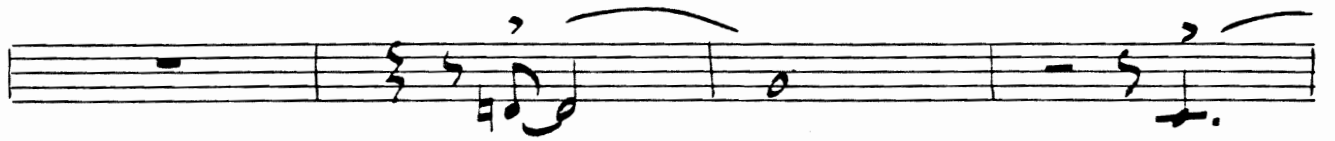
INCORPORATED





Bari

- 3 -





D. S. AL CODA



# 1st TRUMPET

# TINSEL

Recorded on "Dues," Mainstream Records #MRL-359

WILLIE MAIDEN

Musical score for 1st Trumpet, titled "TINSEL" by Willie Maiden. The score includes a treble clef staff with a key signature of two sharps (F# and C#) and a common time signature (C). The score is divided into five measures labeled A through E. Measure A contains a circled "S" and a circled "0". Measure B is marked with "10". Measure C is marked with "24". Measure D is marked with "24". Measure E contains a triplet of eighth notes. The score also includes a bass clef staff with a key signature of two sharps and a common time signature.

P & R  
MUSIC PUBLISHERS

SOLE SELLING AGENT

© 1971 Finis  
INTERNATIONAL

Three staves of musical notation. The first staff features a melodic line in a key signature of two sharps (F# and C#) and a 3/4 time signature. The second and third staves provide accompaniment, including triplet figures and slurs.

A single staff with a treble clef, a whole note, and a measure rest labeled "12".

A staff of music with a common time signature and several chords, each with an accent (>) above it.

A staff of music with several chords and accents.

A staff of music with several chords and accents.

A staff of music with several chords and accents.

A staff of music with a complex chordal texture. A box labeled "D. S. AL CODA" is present at the end of the staff.

A staff of music with a circled symbol at the beginning and a measure rest.

# 2nd TRUMPET

# TINSEL

Recorded on "Dues," Mainstream Records #MRL-359

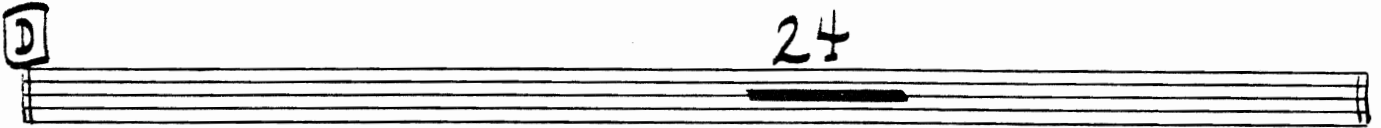
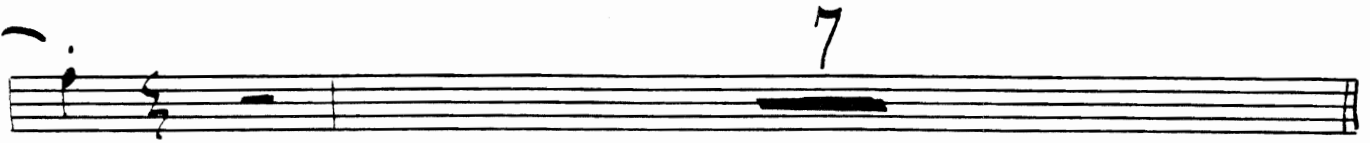
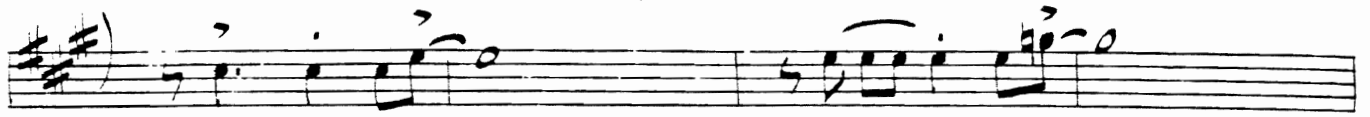
WILLIE MAIDEN

P & R  
MUSIC PUBLISHERS

SOLE SELLING AGENT

© 1973 Finis Music Co.

INTERNATIONAL COPYRIGHT SECURED



TPT. II

-3-

12

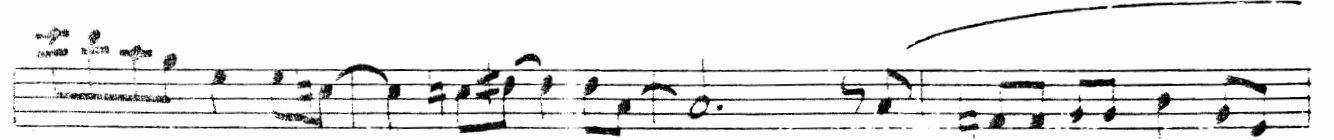
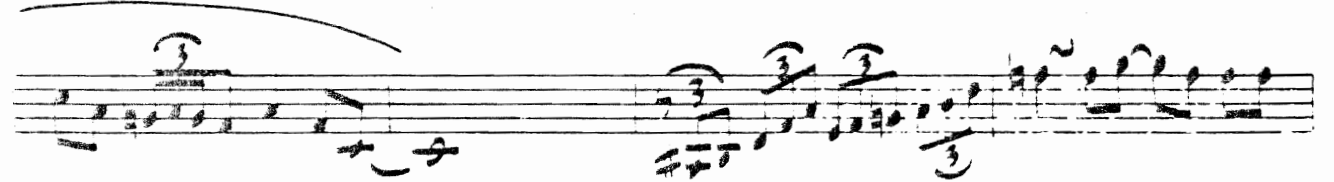
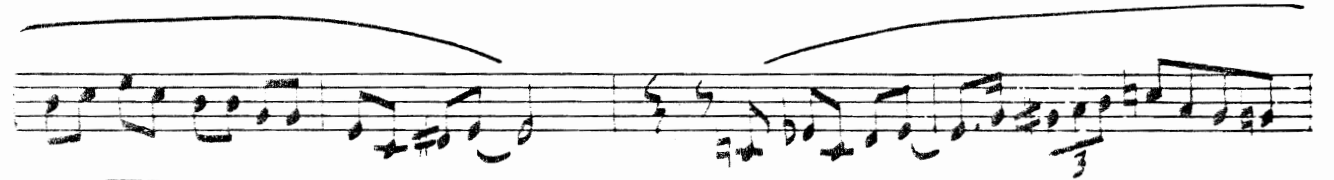
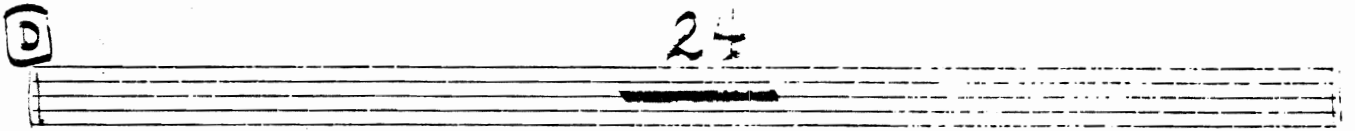
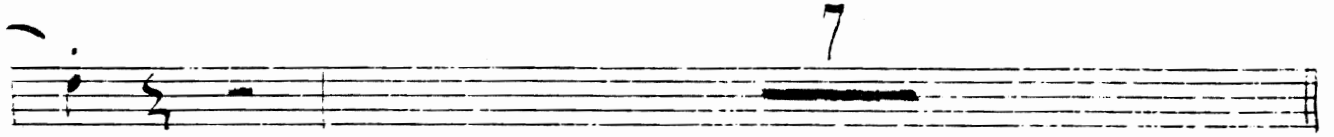
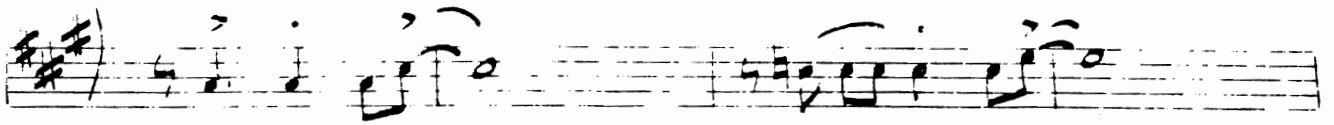
⑤

⑥

D. S. AL CODA

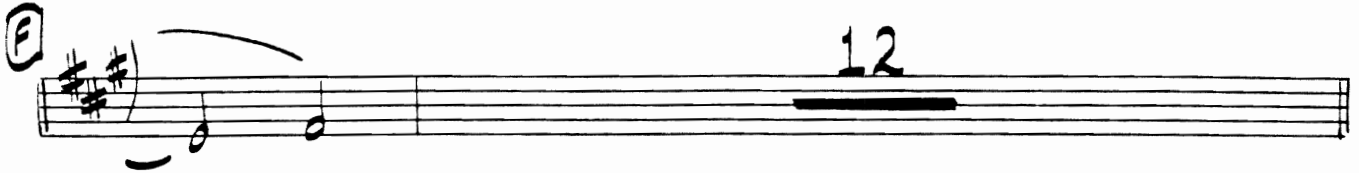






TPT. II

.3.

**F** 

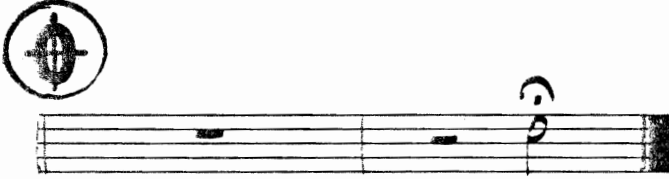
**G** 







  
**D. S. AL CODA**



# 4th TRUMPET

# TINSEL

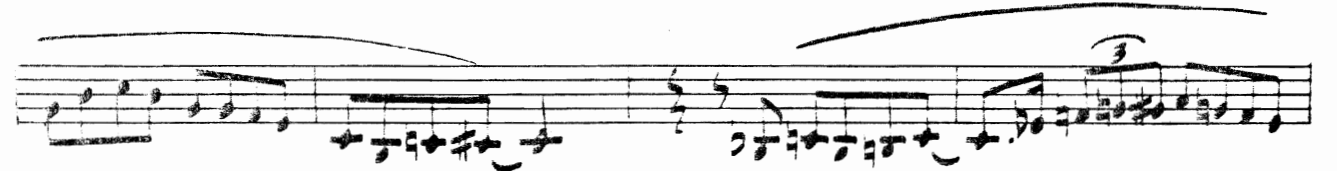
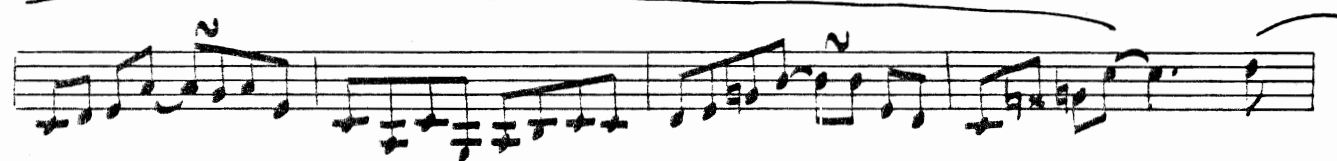
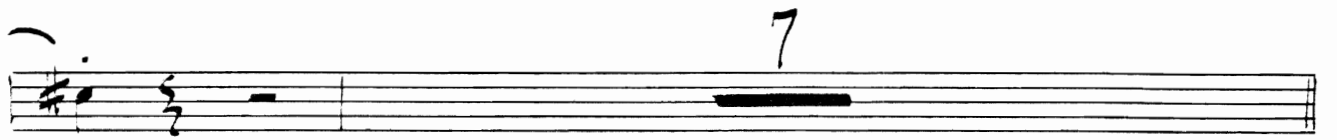
Recorded on "Dues," Mainstream Records #MRL-359

WILLIE MAIDEN

P. R.  
MUSIC PUBLISHERS

SOLE SELLERS  
© 1973

10.

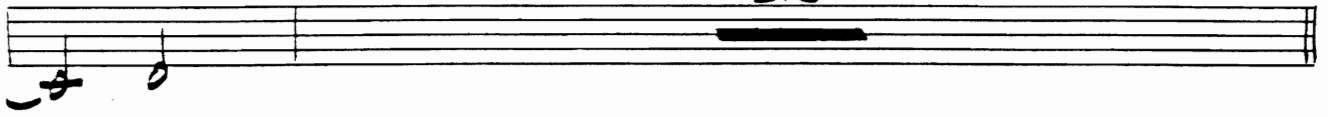


TPT. II

-3-



12



D. S. AL CODA



# 1st TROMBONE

# TINSEL

Recorded on "Dues," Mainstream Records #MRL-359

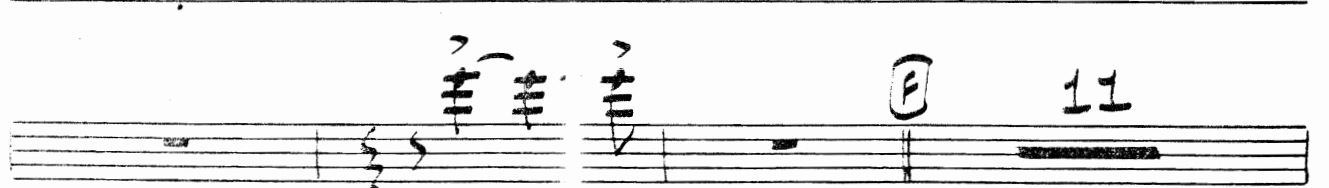
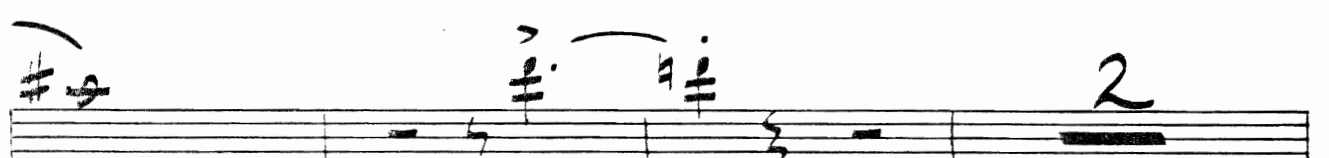
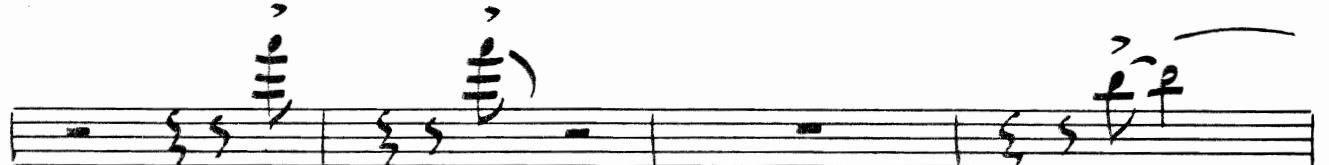
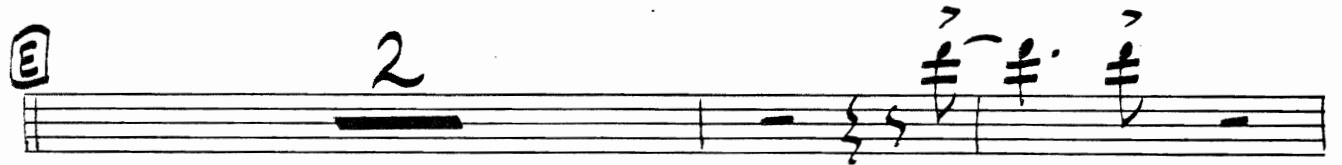
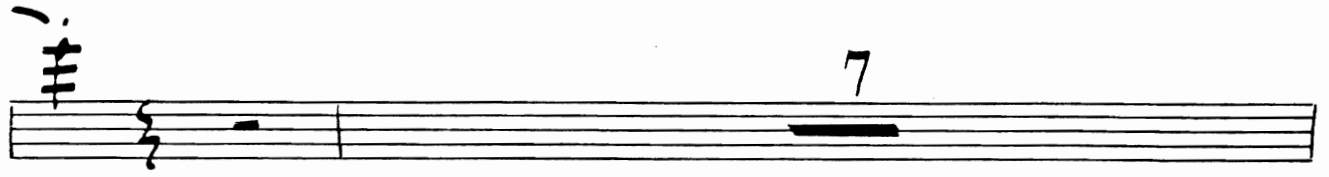
WILLIE MAIDEN

P & R  
MUSIC PUBLISHERS

SOLE SELLING AGENT

© 1973 Finis Music Co.

INTERNATIONAL COPYRIGHT SECURED





TBN. I

Musical score for TBN. I, measures 1-5. The score consists of five staves. The first staff begins with a treble clef, a key signature of one sharp (F#), and a 3/4 time signature. It contains notes with accents and dynamic markings such as *f.* and *p.*. A circled number '6' is present above the second measure. The subsequent four staves contain chordal accompaniment with various accidentals and dynamics.

Musical score for TBN. I, measure 6. The staff contains a sequence of notes with various accidentals (sharps and flats). A box containing the text "D. S. AL CODA" is positioned above the staff.

Musical score for TBN. I, measure 7. The staff begins with a circled 'C' time signature. It features a melodic line with various accidentals and dynamic markings, including a *f.* marking. The staff concludes with a double bar line.

# 2nd TROMBONE

## TINSEL

Recorded on "Dues," Mainstream Records #MRL-359

WILLIE MAIDEN

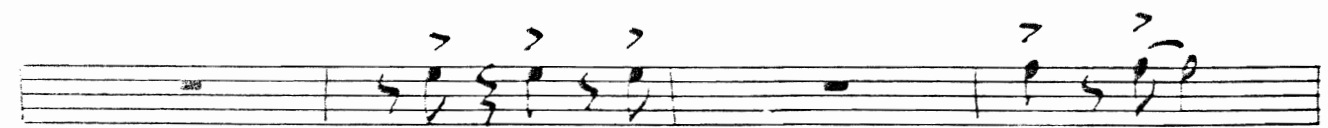
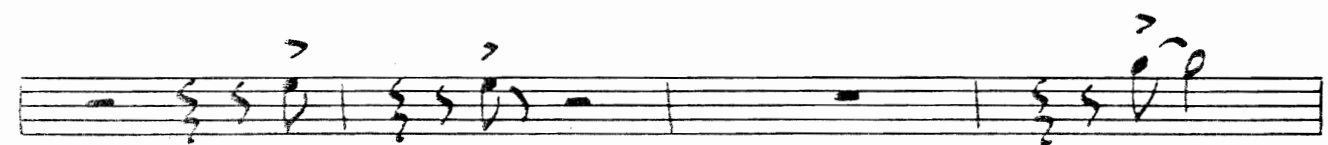
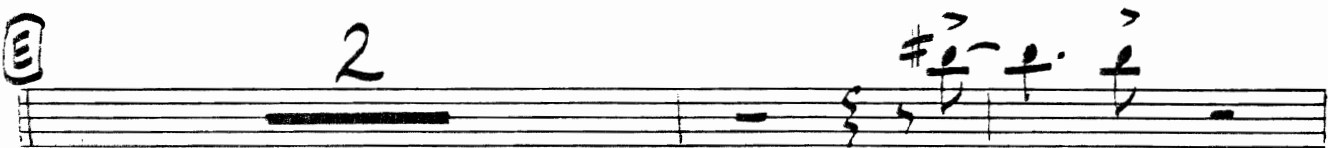
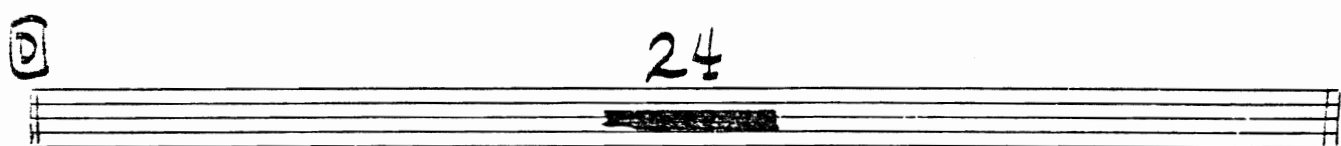
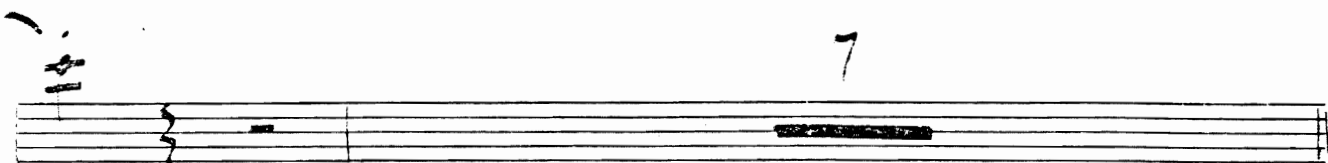
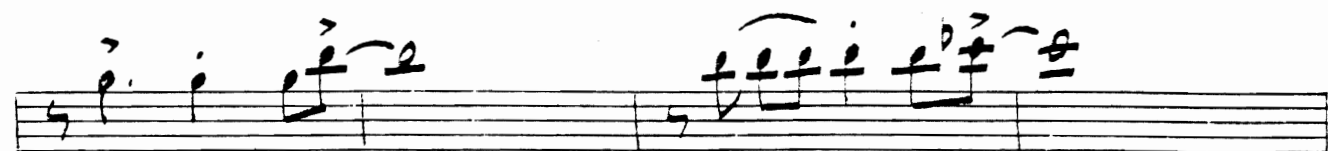
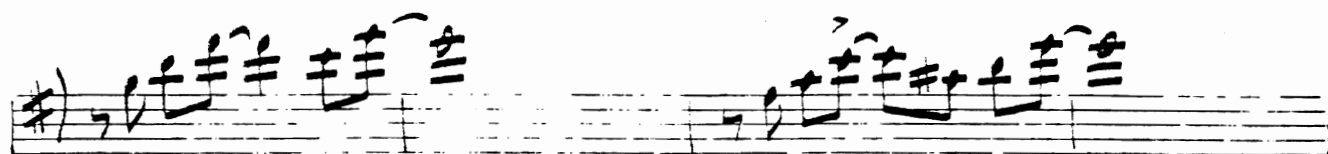
Musical score for 2nd Trombone, featuring various notes, rests, and ornaments. The score includes a circled 'A' and circled 'S' marking, a circled '2' marking, and a circled '6' marking.

P & R  
MUSIC PUBLISHERS

SOLE SELLING AGENT

© 1973 Finis W.

INTERNATIONAL COP.





# 3rd TROMBONE

# TINSEL

Recorded on "Dues," Mainstream Records #MRL-359

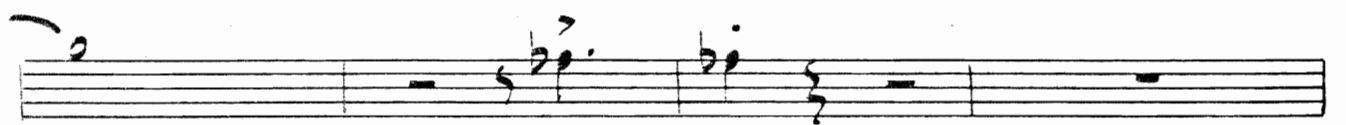
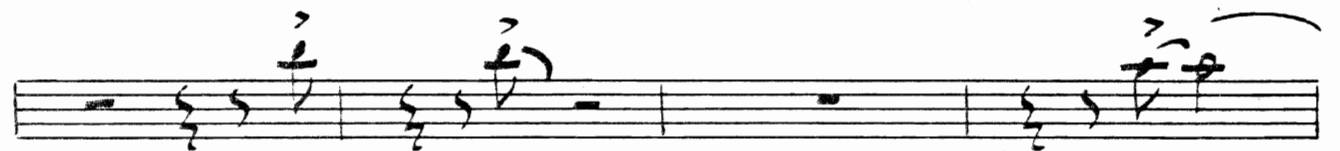
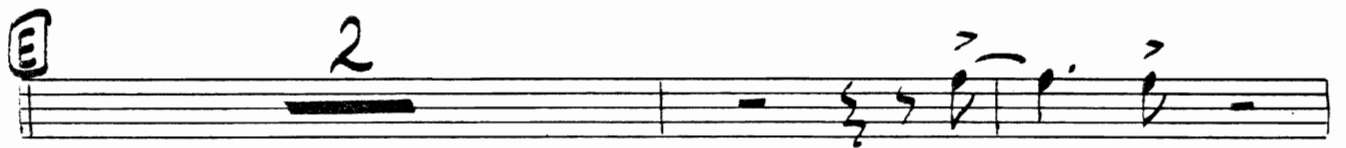
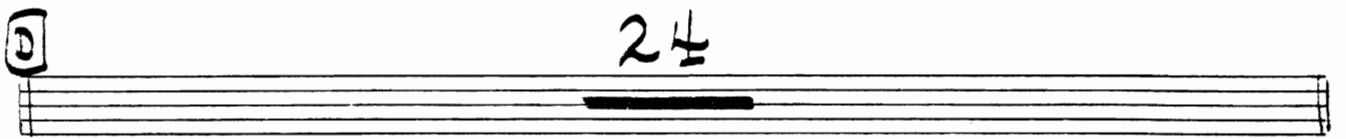
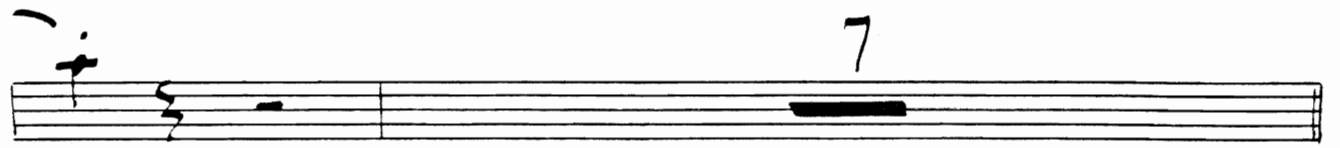
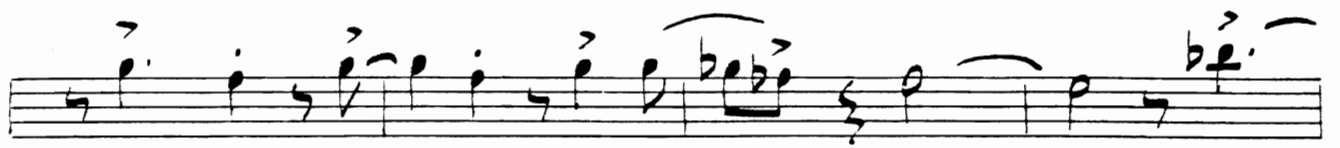
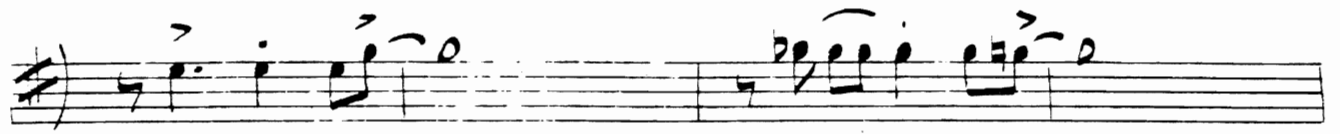
WILLIE MAIDEN

Musical score for 3rd Trombone, featuring various musical notations including clefs, notes, rests, and dynamic markings.

P & R  
MUSIC PUBLISHERS

SOLE SELLING AGENT

© 1973 Fini Co.





# 4th TROMBONE

# TINSEL

Recorded on "Dues," Mainstream Records #MRL-359

WILLIE MAIDEN

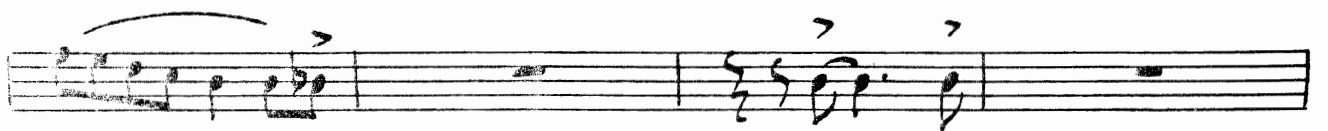
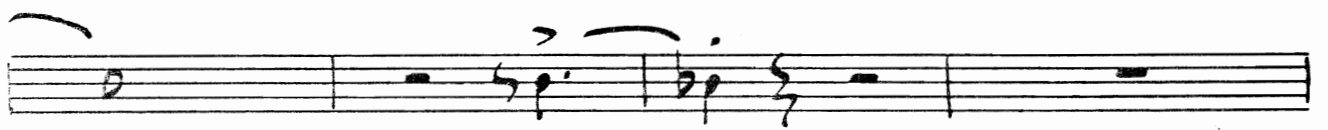
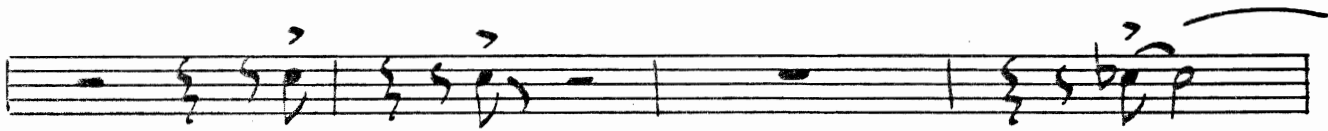
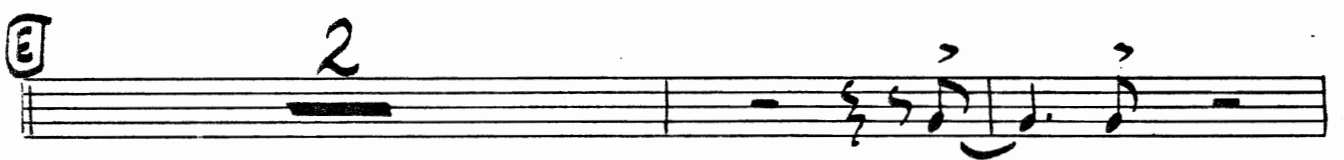
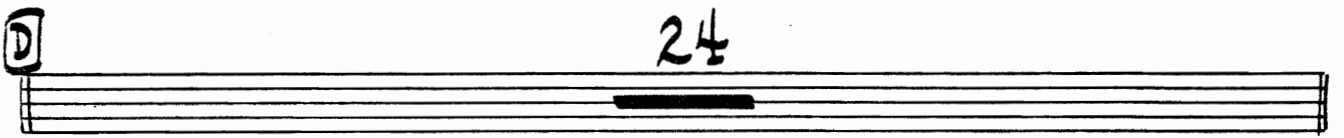
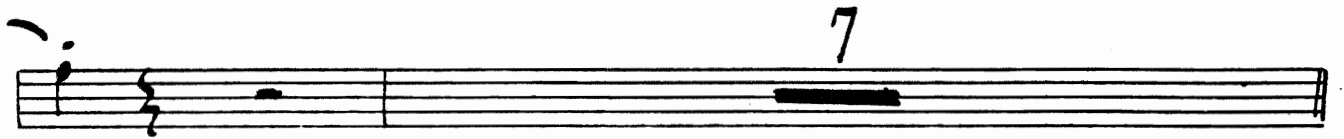
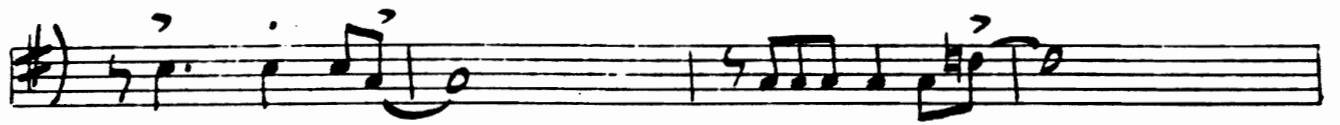
Musical score for 4th Trombone part of "Tinsel" by Willie Maiden. The score consists of ten staves. The first staff is a bass clef staff with a key signature of one sharp (F#) and a common time signature (C). It contains a melodic line with accents. The second staff is a treble clef staff with a key signature of one sharp and a common time signature, containing a bass line with a circled 'S' and a circled '9'. The third staff is a treble clef staff with a key signature of one sharp and a common time signature, containing a melodic line with a circled 'B' and first/second endings. The fourth staff is a treble clef staff with a key signature of one sharp and a common time signature, containing a melodic line. The fifth staff is a treble clef staff with a key signature of one sharp and a common time signature, containing a melodic line. The sixth staff is a treble clef staff with a key signature of one sharp and a common time signature, containing a melodic line with a circled '6'. The seventh staff is a treble clef staff with a key signature of one sharp and a common time signature, containing a melodic line with a circled 'C'. The eighth staff is a treble clef staff with a key signature of one sharp and a common time signature, containing a melodic line. The ninth staff is a treble clef staff with a key signature of one sharp and a common time signature, containing a melodic line. The tenth staff is a treble clef staff with a key signature of one sharp and a common time signature, containing a melodic line.

P & R  
MUSIC PUBLISHERS

OLF SELL

© 1973



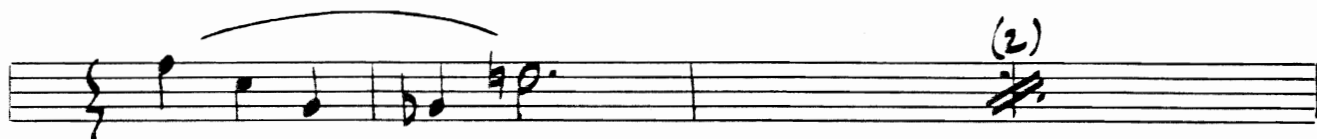
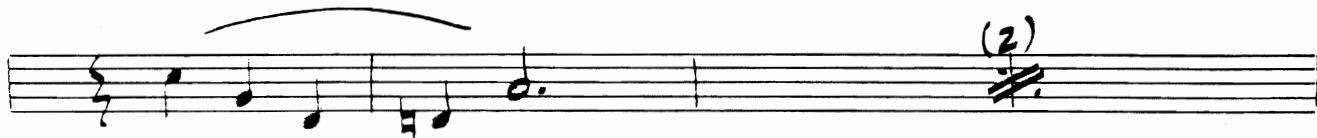


TBN. II

**F** 11



**G**

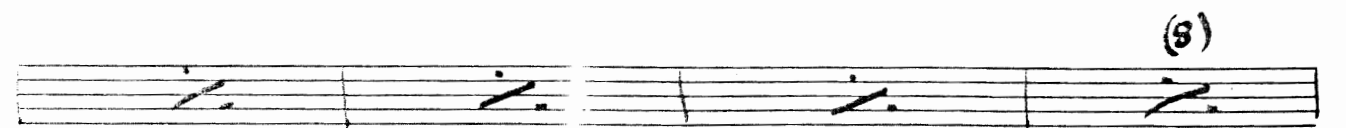
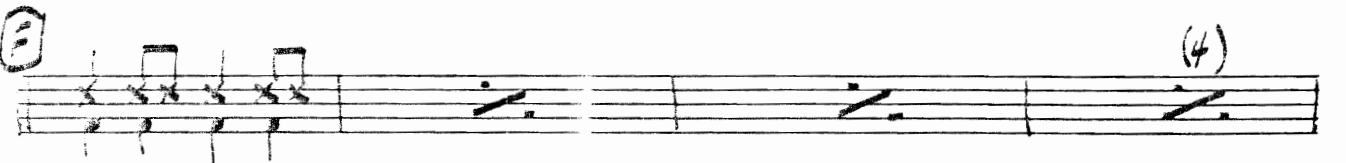
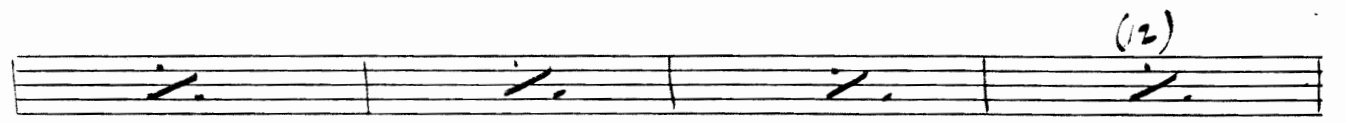
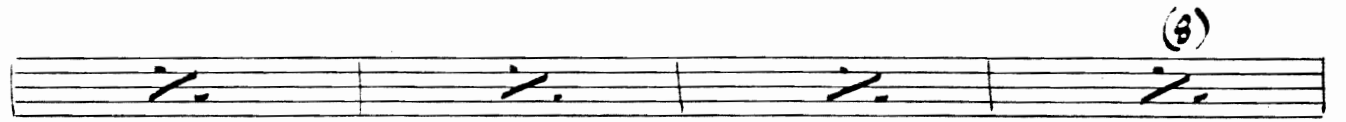
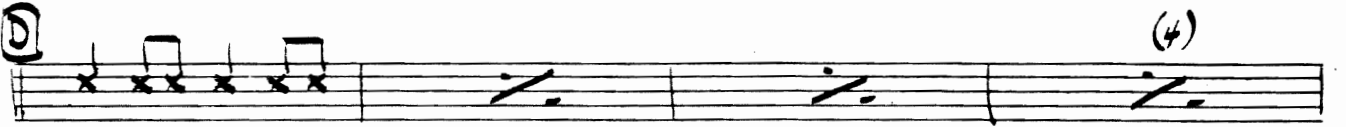
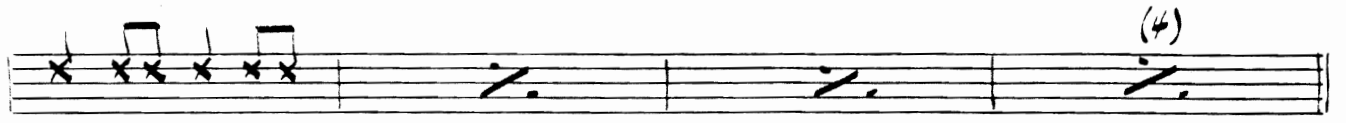


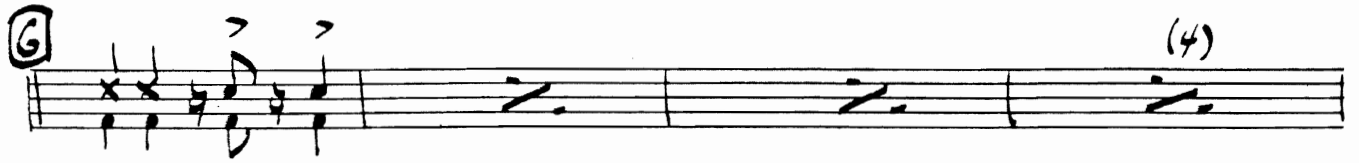
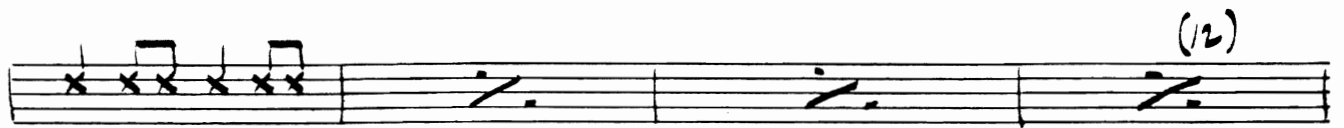
**D**



D. S. AL CODA







PIANO

TINSEL

Recorded on "Dues," Mainstream Records #MRL-359

WILLIE MAIDEN

Handwritten musical score for piano, featuring a treble clef with a key signature of one sharp (F#) and a common time signature (C). The score includes a 3-measure rest at the top right. The notation is primarily chordal, with many notes obscured by diagonal lines. Chord symbols are written above and below the staves.

Chord symbols include: Am<sup>11</sup>, A<sup>b</sup>MAS<sup>7</sup>, G MAS<sup>7</sup>, F<sup>#</sup>m<sup>7</sup><sup>b5</sup>, B<sup>7</sup>, Em<sup>7</sup>, Em<sup>9</sup>MAS<sup>7</sup>, Dm<sup>7</sup>, D<sup>b</sup>7, C MAS<sup>7</sup>, Cm<sup>7</sup>, F<sup>7</sup>b<sup>9</sup>, D<sup>7</sup>b<sup>9</sup>, G MAS<sup>7</sup>, C MAS<sup>7</sup>, Bm<sup>7</sup>, B<sup>b</sup>m<sup>7</sup>, B<sup>b</sup>m<sup>6</sup>, Am<sup>9</sup>, Am<sup>7</sup>b<sup>5</sup>, D<sup>7</sup>, G MAS<sup>7</sup>, D<sup>b</sup>7, C MAS<sup>7</sup>, Am<sup>7</sup>D<sup>7</sup>G<sup>b</sup>MAS<sup>7</sup>, Am<sup>7</sup>, G MAS<sup>7</sup>, F<sup>#</sup>m<sup>7</sup><sup>b5</sup>, F<sup>#</sup>m<sup>7</sup>, B<sup>7</sup>, D<sup>b</sup>MAS<sup>7</sup>, C MAS<sup>7</sup>9+11, Cm<sup>13</sup>, Bm<sup>7</sup>, E<sup>7</sup>, B<sup>b</sup>m<sup>7</sup>, E<sup>b</sup>7, Am<sup>7</sup>, D<sup>7</sup>, E<sup>b</sup>m<sup>7</sup>, A<sup>b</sup>7, Em<sup>7</sup>, B<sup>b</sup>7, E<sup>b</sup>MAS<sup>7</sup>, A<sup>b</sup>MAS<sup>7</sup>, G MAS<sup>7</sup>, F<sup>#</sup>m<sup>7</sup><sup>b5</sup>, B<sup>7</sup>.

Other markings include a circled 'S', a circled 'A', a circled '3', and a circled '2'.

P & MUSE PUBLISHERS

SOLE SELL © 197

Em9 Eb9 Dm9 Db9+11 CMAT9+11 Cm9 F9

Bm9 Bbm9 Eb9 Am9 D7 Ebm9 Ab9

G Bm7 E7 Am7 Ab7 **D** GMAT7 F#m7b5 B7

Em7 Eb7 Dm7 Db7 CMAT7 Cm7 F7

Bm7 Em7 Bbm9 Cm7Bbm7 Am7 D7

Bm7 GMAT7 CMAT7 Bm7 Bbm7 Am7 AbMAT7 **E** GMAT9+11 Gb F#m7b5 B7

Em9 A7 Dm9 Db7 CMAT7 Cm7 F7

Bm9 E7 Bbm7 Eb7 Am7 Am7 D7b9

Bbm7 Am7 D7b9 **SOLO** **E** GMAT7 FMAT7

GMAT7 FMAT7 CMAT7 Bbm7

PNO.

. 3 .

GMAJ7 FMAJ7 GMAJ7 E7 Am7

D7

Cm7 F7 Ebm7 Ab7

D. S. AL CODA





**BASS**

**TINSEL**

Recorded on "Dues," Mainstream Records

WILLIE MAIDEN

Musical score for bass guitar, including notation and chord diagrams.

**Section A:**

Chords:  $G^{MAJ7}$ ,  $F\#m^7b5$ ,  $B^7$

Chords:  $C^{MAJ7}$ ,  $Cm^7$ ,  $F^7b9$ ,  $D^7b9$ ,  $G^{MAJ7}$ ,  $C^{MAJ7}$ ,  $Bm^7$ ,  $Bb^7$ ,  $Bb^7m6$

Chords:  $A^{m9}$ ,  $A^{m7b5}$ ,  $D^7$ ,  $G^{MAJ7}$ ,  $D^7$ ,  $C^{MAJ7}$ ,  $A^{m7}$ ,  $D^7$ ,  $G^{MAJ7}$

**Section B:**

Chords:  $Bm^7$ ,  $E^7$ ,  $Bb^7m$ ,  $E^7b$ ,  $A^{m7}$ ,  $D^7$ ,  $E^7b$ ,  $A^7b$

Chords:  $Bm^7$ ,  $G^7b7$ ,  $E^7bMAJ7$ ,  $A^7bMAJ7$ ,  $G^{MAJ7}$ ,  $F\#m^7b5$ ,  $B^7+$

P & R  
MUSIC PUBLISHERS

SOLE SELLING AGENT  
© 1973 Finis Music Co.  
INTERNATIONAL COPYRIGHT CLEARANCE CENTER

#) Em9 Eb9 Dm9 Db9+11 CMAJ9+11 Cm9 F9

Bm9 Bbm9 Eb9 Am9 D7 Ebm9 Ab7

G Bm7 E7 Am7 Ab7 D GMAJ7 F#m7b5 B7

Em7 Eb7 Dm7 Db7 CMAJ7 Cm7 F7

Bm7 Em7 Bbm9 Cm7 Bbm7 Am7 D7

Bm7 GMAJ7 CMAJ7 Bm7 Bbm7 Am7 AbMAJ7 E GMAJ9+11 Gb

F#m7b5 B7 Em9 A7 Dm9 Db7 CMAJ7

Cm7 F7 Bm9 E7 Bbm7 Eb7 Am7

Am7 D7b9 Am7 D7b9 E GMAJ7 FMAJ7

GMAJ7 FMAJ7 Cm7 Bbm7

BASS

- 3 -

C MA7 B MA7 G MA7 F MA7 G MA7 E7 Am7

Am7 D7

(6)

(Coda symbol)

D. S. AL CODA